

NHS Airedale Wharfedale and Craven Clinical Commissioning Group

Update to the Keighley Area Committee on the CCG in 15/16

Topics

- Our population
- Our CCG
- Our performance and progress
- Our future

Our Vision

To deliver proactive, co-ordinated, person centred care with our health and care partners across our communities.



- 16 member practices
- 157,000 patients
- £208m budget for 16/17

Our Population



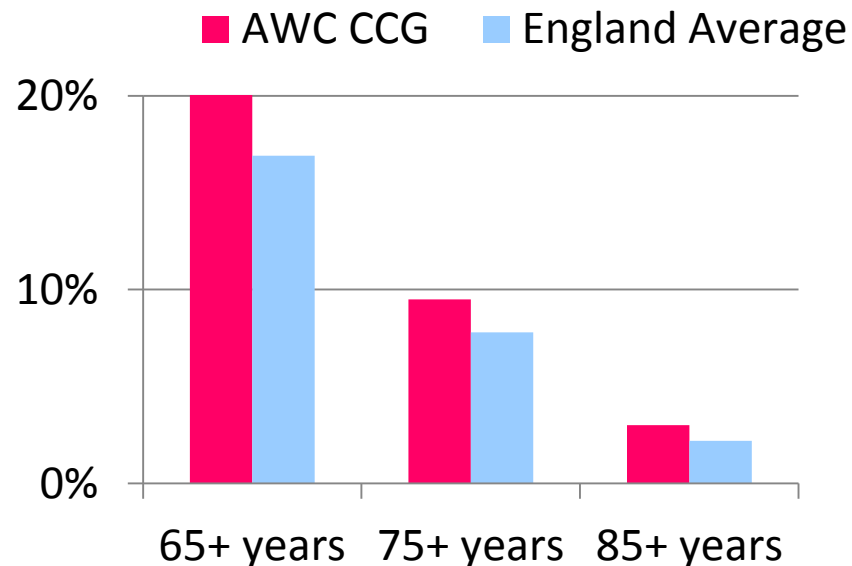
1 in 10 people in the AWC area
identify their ethnicity as **Asian or
Asian British**



1 in 6 people
have diagnosed
**high blood
pressure**



1 in 2 people have
a long standing
**health
condition**



Our population has more **older people**
than the England average

1 in 5 people are
a **carer** for a
friend or family
member



Some facts.....

In 15/16 we spent £195 million on health services; £1,242 for each patient*.

The population of Bradford and AWC is growing. In five years it is expected to have increased by 7%.

The average number of GP appointments per person is rising, expected to > double from 4 per year in 2004 to 10 in 2017

£7 in every £10 of health and social care spend is for people who have a long term health problem

£1,000 buys:-

- 4 ambulance responses
- 31 GP appointments
- 20% of a hip replacement

Major causes of death are heart disease, cancer and respiratory (breathing) diseases.

Our Performance :

NHS Constitution Standards 2015/16

Targets Met

 18 week wait for treatment

 6 week wait for diagnostics

 A&E 4 hour waits

 Cancer Waiting times

2 week wait 96.3%

31 day wait 98.5%

62 day wait 89.8%

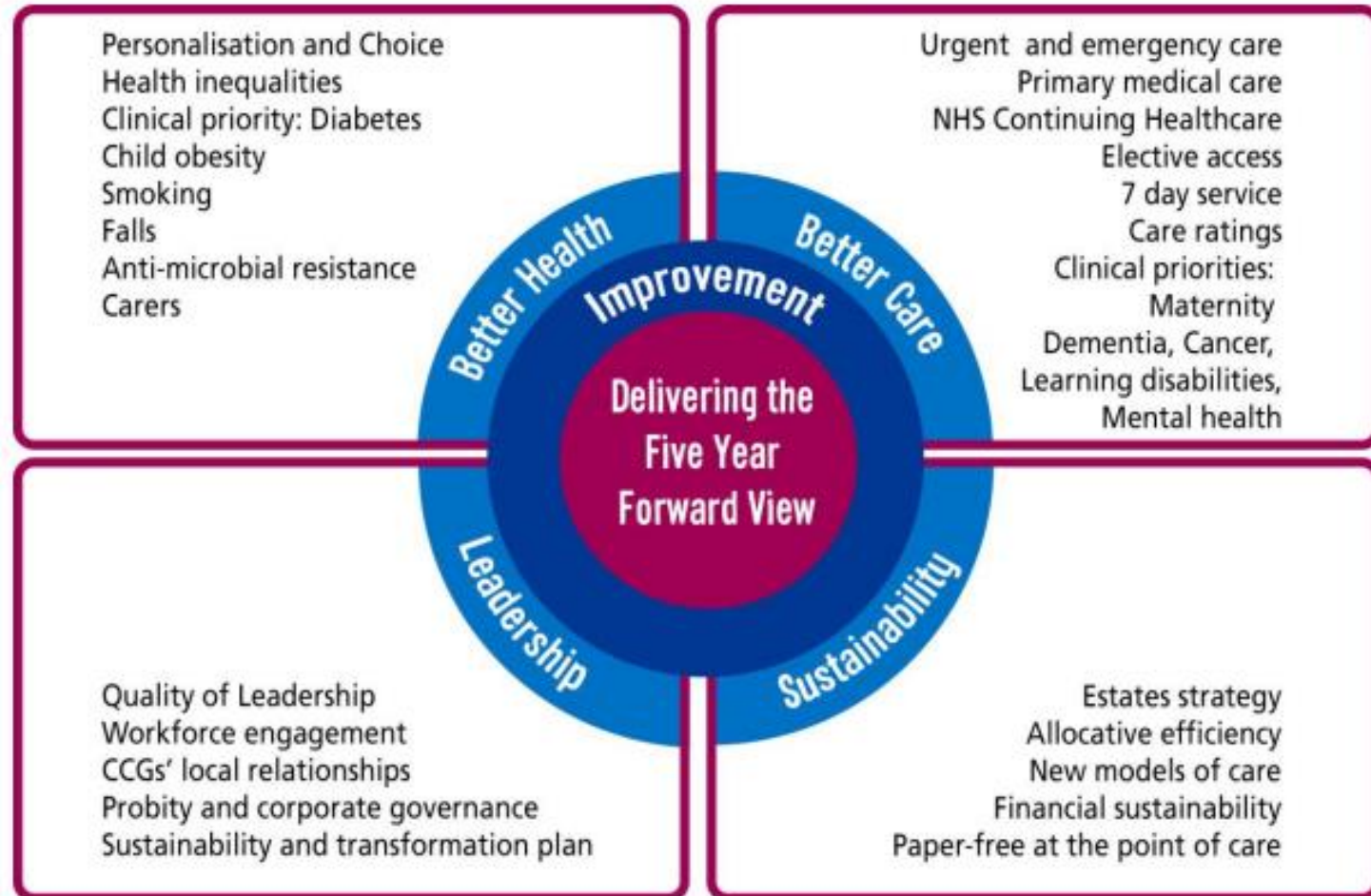
Underperformance

 A&E Handovers

 MRSA

 C. Difficile Cases

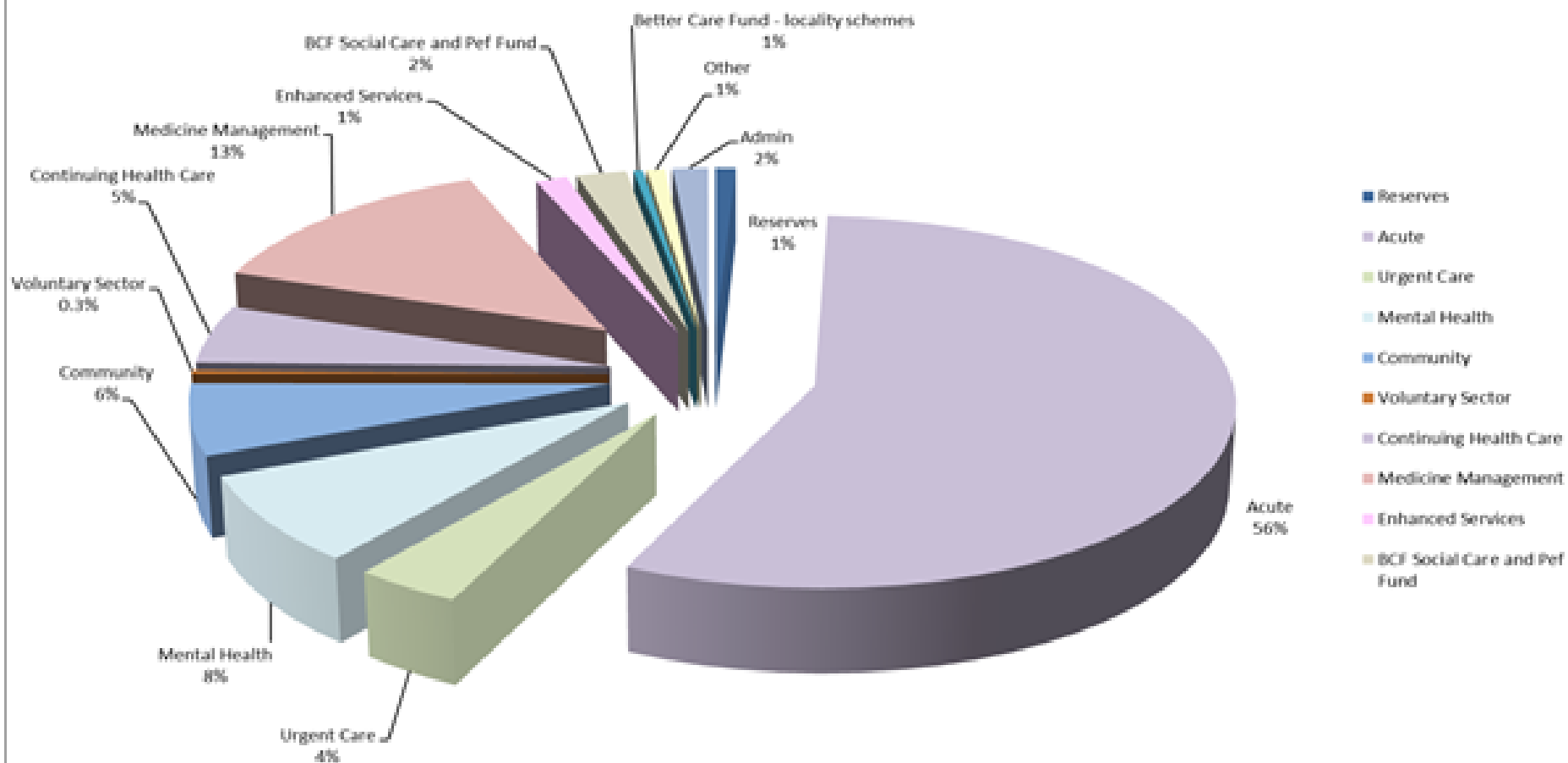
Improvement and Assessment Framework



Our Finances

Expenditure in 2015/16

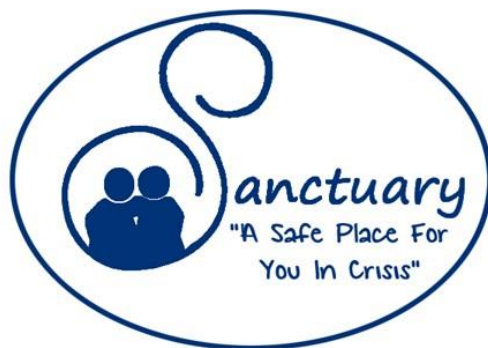
Airedale Wharfedale and Craven Expenditure 15/16



Some examples of our work in 15/16



Improving the Quality of Care



The Sanctuary @ Mind



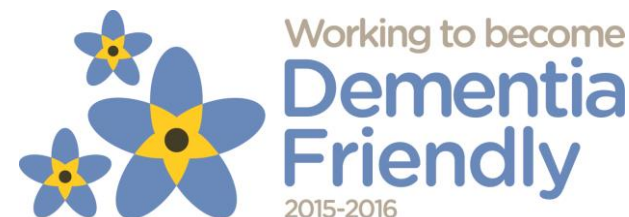
Cancer Diagnosis - ACE 2



Reducing Pressure
Ulcers



Discharge Planning



Partnership working
to improve residential
care

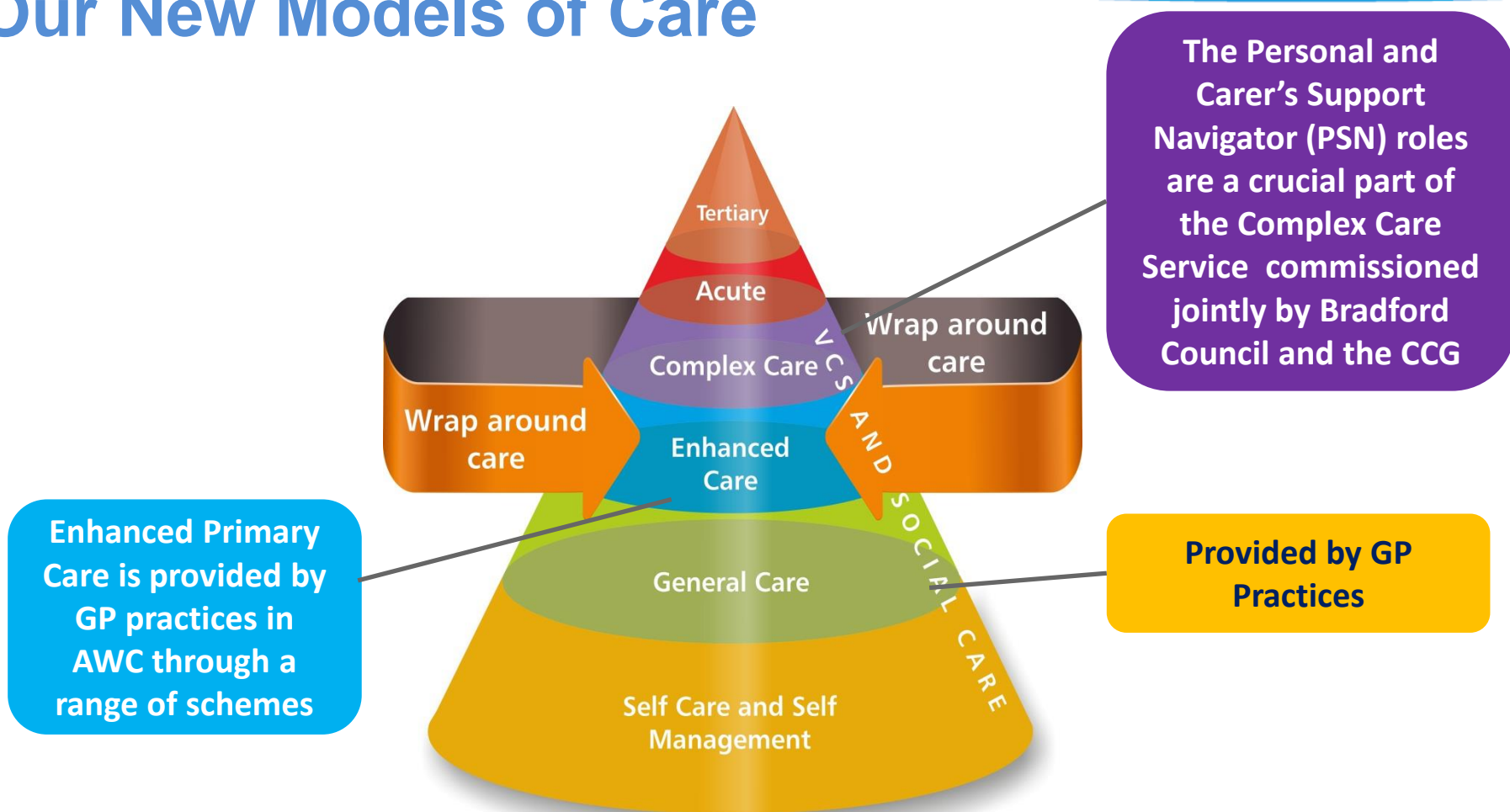


Pressure Ulcer Awareness



Community Defibrillators

Our New Models of Care



Integrated Care Pioneer Programme

Play Pioneer Video

<https://vimeo.com/152272285>



**Airedale, Wharfedale and Craven
reflect on year two as a pioneer**

Sue Pitkethly, Chief Operating Officer at Airedale, Wharfedale and Craven CCG reflects on year two as a pioneer and shares some progress and development from their programme, including their complex and enhanced care models.

Some of our work in 16/17.....

Integrated diabetes
service



SERIOUS ILLNESS CARE
Programme UK

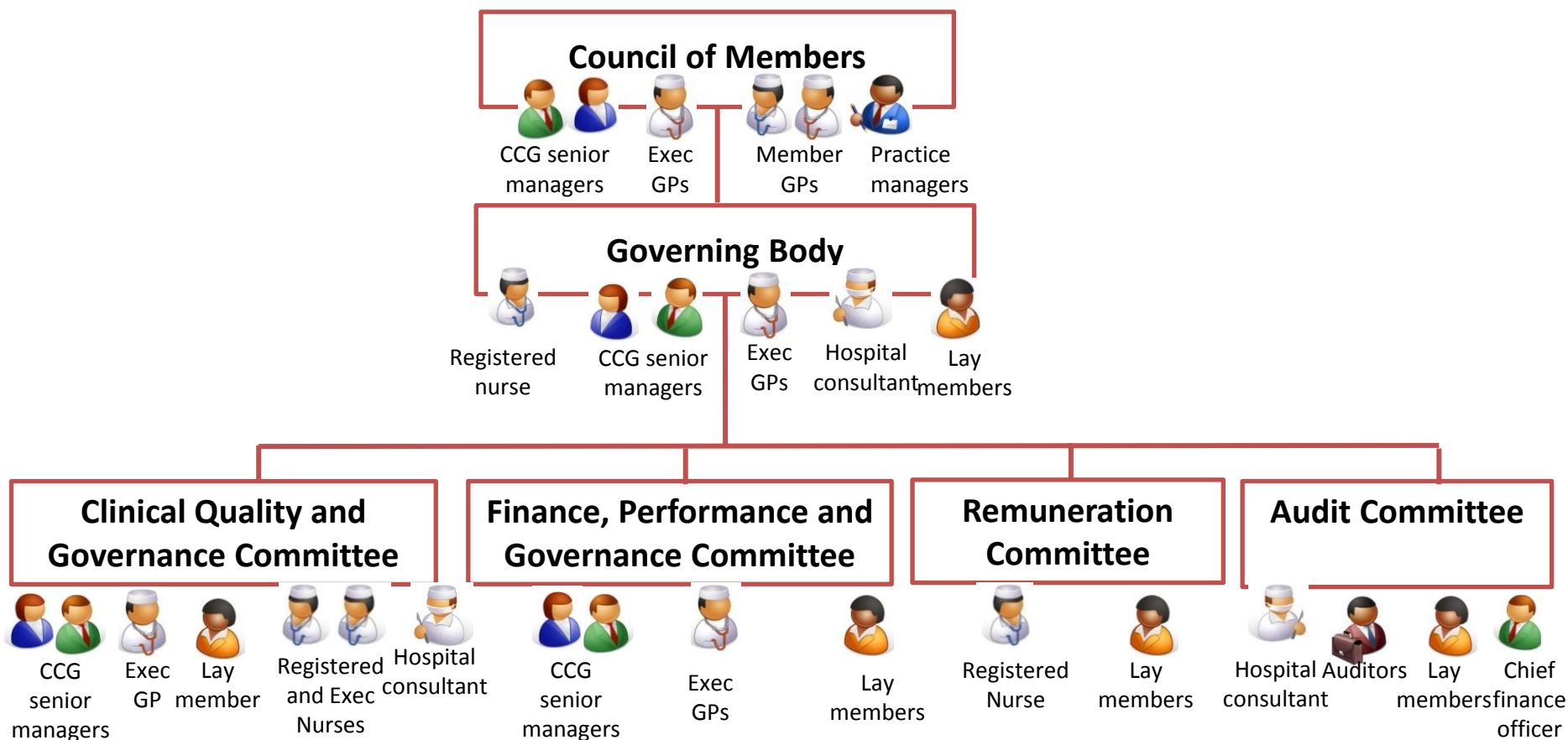
Better conversations, better care



**IT'S YOUR NHS,
DON'T WASTE IT.**

We're making your local NHS work better for you. Find out more and get involved...

Governance Structure 2016



Our Future Leadership changes at the CCG

Goodbye and thank you
to Dr Phil Pue and Neil
Smurthwaite



Hello and welcome to
Helen Hirst and Julie Lawreniuk



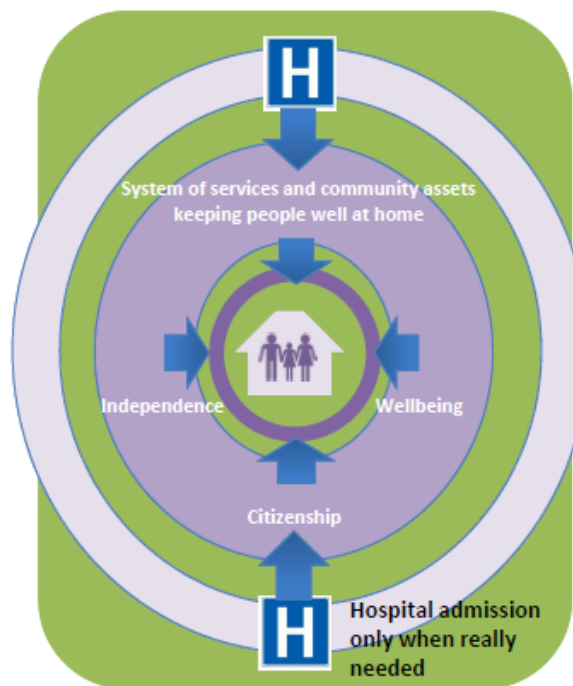
Three CCGs working together

- Previously jointly commissioned with the three CCGs: mental health, children and learning disabilities although the decision making arrangements have remained at individual CCG level.
- The three CCGs' membership (GP practices) agreed to establish shared management arrangements with a shared Accountable Officer from 1/10/16 and a shared Chief Finance Officer from 1/9/16
- Work has commenced on development of a shared staff structure across the 3 CCGs, intended to be in place by April 17.
- Will continue to have 3 CCGs with a Governing Body and Council of Members
- Reviewing the governance and decision making arrangements across the three CCGs to become more efficient, effective and more aligned to the direction of travel for clinical commissioning

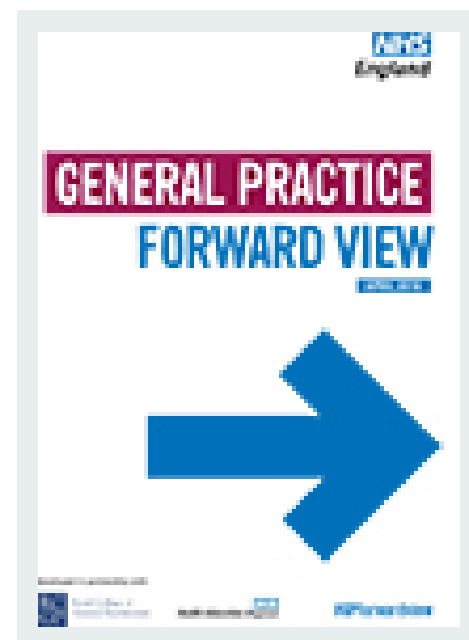
Our Future



Sustainability and
Transformation Plan



Accountable Care
System



Our Future

Future Context

- **Rising Demand**
- **Self Care**
- **Integrated Care**
- **Funding Gap**
- **Doing things differently**